

ST1-R

SKY TIMERS

Multi-Function Analog Timer

Product Features

Wide Operating Voltage: From 24V ~ 240V AC and DC.

Versatility: Five timing series (A through E) available with four time ranges each. Time ranges are selectable through two DIP switches.

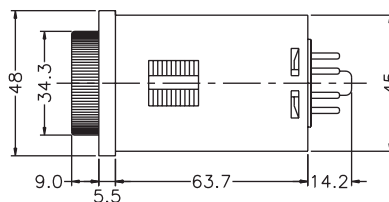
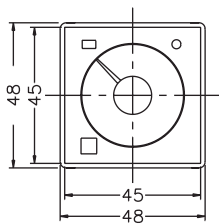
Multiple Modes of Operation: Two modes are selectable through a slide switch. Mode A: 2C for DPDT time-limiting output contacts. Mode B: 1A1C for SPDT instantaneous and time-limiting output contacts.

Standardization: UL and C-UL recognized, and CE Certified

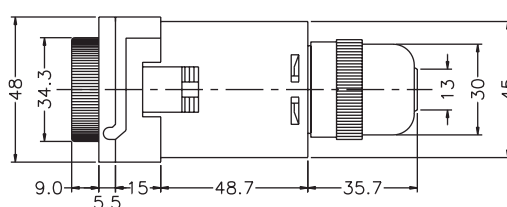
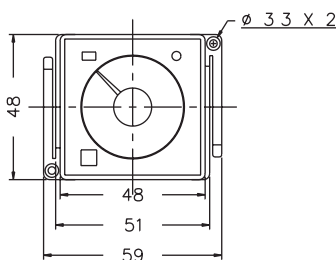


Dimensions

Surface mount using NDS-8 socket

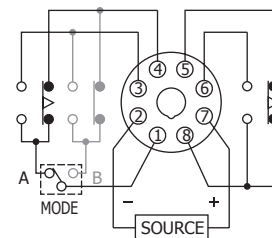


Surface mount using NDS-8 or NDS-8F socket and PM-48 bracket

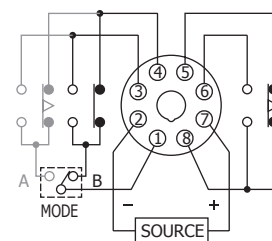


Connections

Mode A: 2C



Mode B: 1A1C

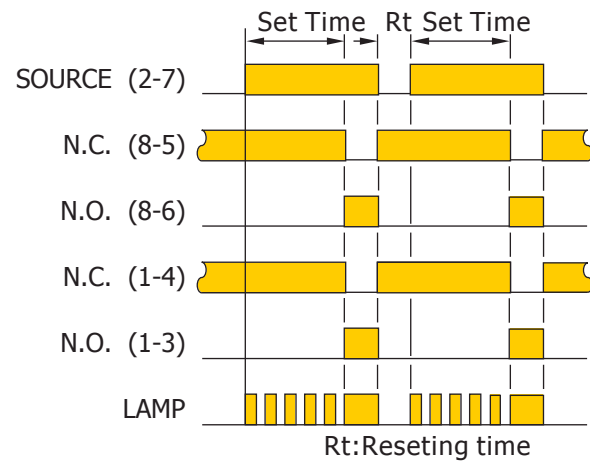


Specifications

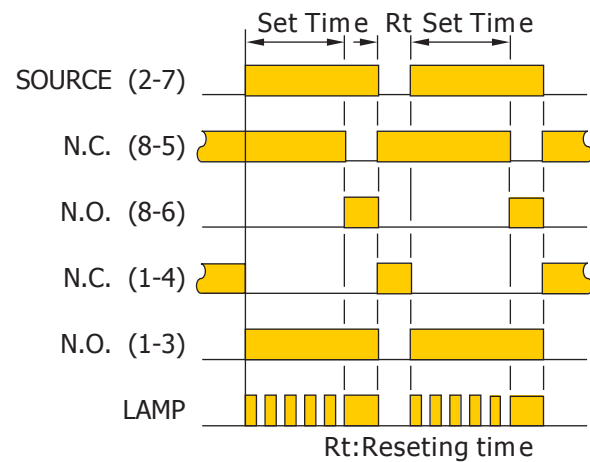
Operating Voltage (VAC/VDC): 24~240
 Allowable Range: 85~110% of rated voltage
 Contact Rating: 250VAC 5A (resistive load)
 Life:
 5,000,000 operations mechanical
 100,000 operations electrical
 Ambient Temperature: -10~50°C
 Ambient Humidity: 85% RH Max
 Frequency: 50/60Hz
 Reset Time: .1 s Max
 Weight: 115g
 Power Consumption: ~2VA

Timing Charts

Mode A: 2C



Mode B: 1A1C



Type Selection

Type	Time Range			
ST1-RA	1s	10s	1m	10m
ST1-RB	3s	30s	3m	30m
ST1-RC	6s	60s	6m	60m
ST1-RD	1m	10m	1h	10h
ST1-RE	3m	30m	3h	30h



83 Oxford West Drive, Oxford, Georgia 30054

Phone: (770) 788-9500 Fax: (770) 788-9555
www.skytimers.com

Ordering Information

ST1-RA

A-E — timing series
 (see above for available timings)